



Rab 5C Polyclonal Antibody

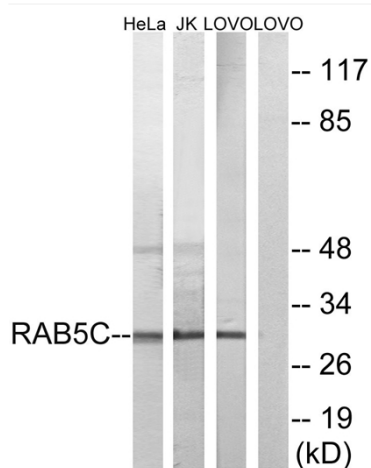
Catalog No	YP-Ab-16204
Isotype	IgG
Reactivity	Human;Mouse;Rat
Applications	WB;IHC;IF;ELISA
Gene Name	RAB5C
Protein Name	Ras-related protein Rab-5C
Immunogen	The antiserum was produced against synthesized peptide derived from human RAB5C. AA range:122-171
Specificity	Rab 5C Polyclonal Antibody detects endogenous levels of Rab 5C protein.
Formulation	Liquid in PBS containing 50% glycerol, 0.5% BSA and 0.02% sodium azide.
Source	Polyclonal, Rabbit,IgG
Purification	The antibody was affinity-purified from rabbit antiserum by affinity-chromatography using epitope-specific immunogen.
Dilution	WB: 1/500 - 1/2000. IHC: 1/100 - 1/300. ELISA: 1/5000.. IF 1:50-200
Concentration	1 mg/ml
Purity	≥90%
Storage Stability	-20°C/1 year
Synonyms	RAB5C; RABL; Ras-related protein Rab-5C; L1880; RAB5L
Observed Band	30kD
Cell Pathway	Cell membrane ; Lipid-anchor ; Cytoplasmic side . Early endosome membrane ; Lipid-anchor . Melanosome . Identified by mass spectrometry in melanosome fractions from stage I to stage IV. .
Tissue Specificity	Brain,Lung,
Function	function:Protein transport. Probably involved in vesicular traffic.,similarity:Belongs to the small GTPase superfamily. Rab family.,subcellular location:Identified by mass spectrometry in melanosome fractions from stage I to stage IV.,subunit:Binds EEA1.,
Background	Members of the Rab protein family are small GTPases of the Ras superfamily that are thought to ensure fidelity in the process of docking and/or fusion of vesicles with their correct acceptor compartment (Han et al., 1996 [PubMed 8646882]).[supplied by OMIM, Nov 2010],
matters needing attention	Avoid repeated freezing and thawing!



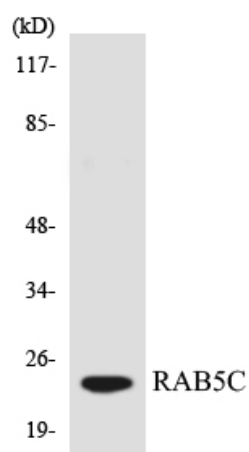
Usage suggestions

This product can be used in immunological reaction related experiments. For more information, please consult technical personnel.

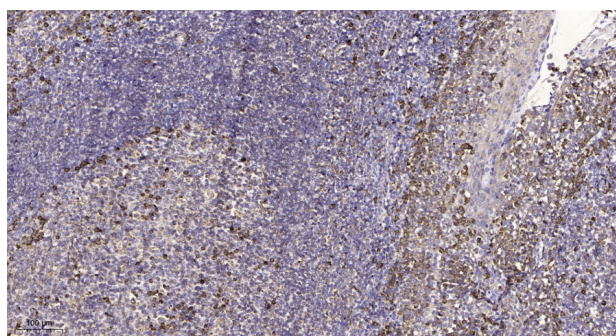
Products Images



Western blot analysis of lysates from LOVO, HeLa, and Jurkat cells, using RAB5C Antibody. The lane on the right is blocked with the synthesized peptide.



Western blot analysis of the lysates from 293 cells using RAB5C antibody.



Immunohistochemical analysis of paraffin-embedded human tonsil. 1, Antibody was diluted at 1:200(4° overnight). 2, Tris-EDTA, pH9.0 was used for antigen retrieval. 3, Secondary antibody was diluted at 1:200(room temperature, 45min).